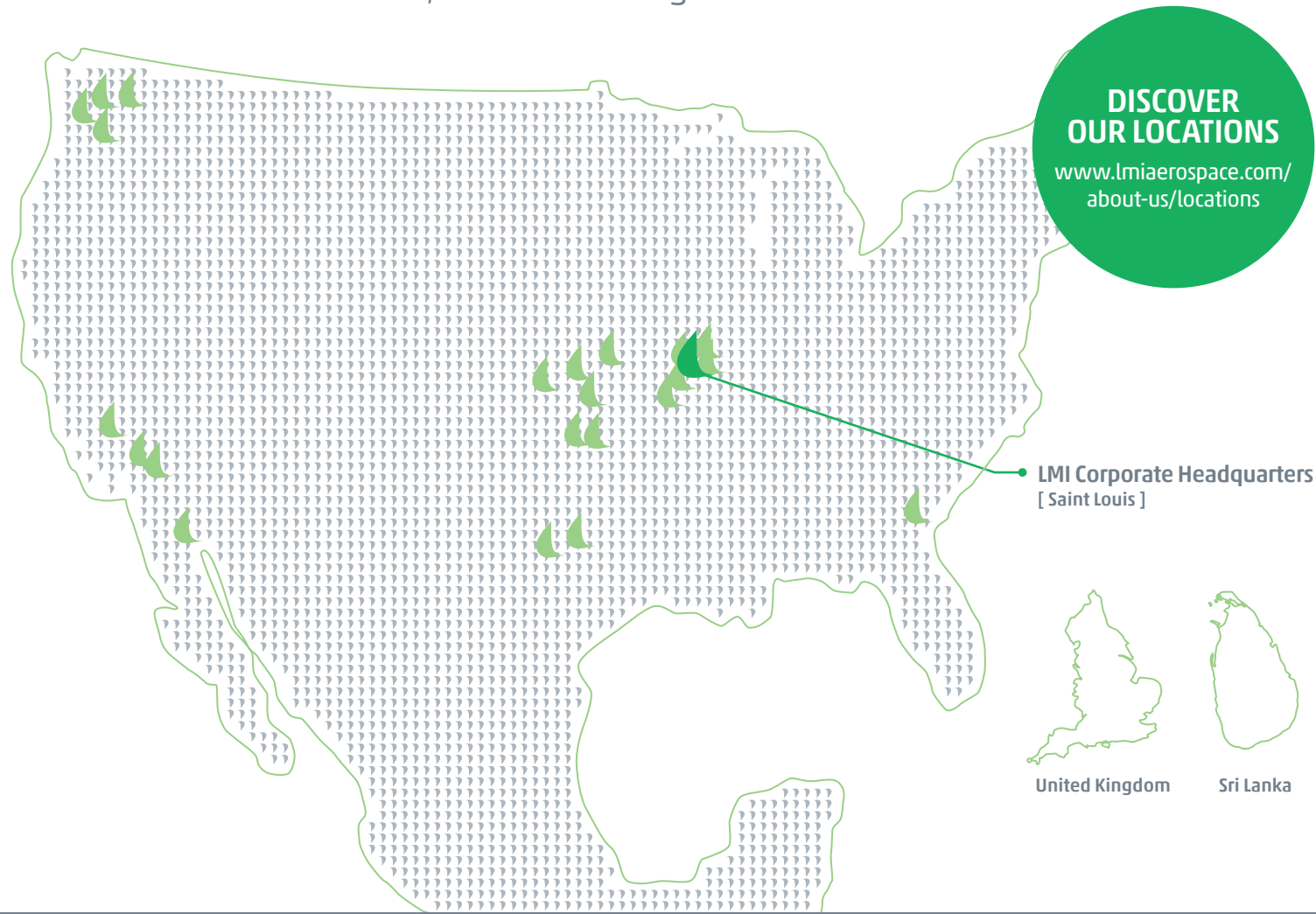


LMI Aerospace has 21 locations throughout the United States, Mexico, the United Kingdom and Sri Lanka.



LMI AEROSPACE IS A MEMBER OF THE SONACA GROUP



Canada



Brazil

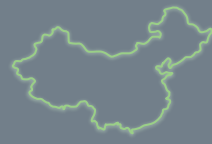


Belgium

[Sonaca Group Headquarters]



Romania



China

Let Your Career **Soar With Us!**

ABOUT US

LMI Aerospace is a leading supplier of **structural solutions and engineering services** for *large commercial airplanes, business & regional jets, and military aircraft.*

We employ approximately 2,000 engineering, manufacturing and testing experts across LMI. Our integrated team approach and full life cycle of capabilities enable our employees to take advantage of a wide range of opportunities for career growth within our organization.

LMI is a member of the Sonaca Group, a global Belgian company active in the development, manufacturing and assembly of advanced structures for civil, military and space markets. The group is especially known for its capability to design and produce advanced structures such as wing movables and complex fuselages. Sonaca Group also supplies engineering services, large sheet metal elements, wing panels, composite structures and machined components.

OUR VALUES

We work hard to incorporate our values in every decision we make and every action we take. They are the foundation of our success and define how we work together:

L LET'S DO THE RIGHT THING

- We act with consideration for our people, partners, customers, shareholders, communities and resources.
- We do what's right even when we think no one's looking, and when we make mistakes, we own them and fix them.
- We openly share information and insights as appropriate.

M MAKE A DIFFERENCE & SEEK THE BEST IN EVERYONE

- We expect the best in ourselves and help others to find the best in themselves.
- We assume the best of others and are open to other perspectives.
- We actively listen to create understanding, and ask questions no matter how tough.

I IMAGINE SOMETHING GREATER

- We look to see the bigger picture – how our work helps to serve our customers, how our individual successes link to LMI's success, and to understand the challenges and opportunities shaping our business.
- We reach out to others across the organization for insights that help guide decisions and generate ideas.
- We continually look for and are open to better ways to do things and think about how to make LMI a better company.

OUR MISSION

Creating the structures that help our customers soar.

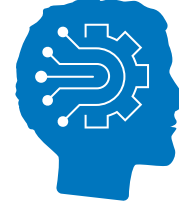
OUR COMPREHENSIVE WAGE AND BENEFITS PACKAGE INCLUDES

- 401(k) retirement savings plan with a percentage company-match contribution
- Competitive wages
- Paid holidays
- Paid time off
- Medical, dental and vision insurance
- Short-term disability
- Long-term disability
- Accident insurance
- Life insurance
- Employee assistance plan – for access to counseling, consulting and other community resources
- Wellness program
- Tuition assistance



MANUFACTURING

- Assembly
- Machining
- Sheet-metal fabrication & forming
- Processing
- Kitting & distribution
- Composites manufacturing



ENGINEERING

- System design & integration
- Product design
- Support services
- Manufacturing engineering

SUPPORT FUNCTIONS

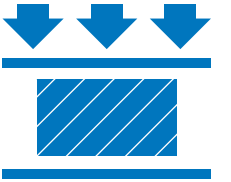
- Finance & accounting
- Contracts & pricing
- Program management
- Supplier management
- Quality
- Environment, health & safety
- Human resources



OPPORTUNITIES AT LMI

TESTING

- Material testing
- Structural & element testing



READY TO DISCOVER YOUR FUTURE AT **LMI AEROSPACE?**

APPLY TODAY

www.lmiaerospace.com/careers

FOLLOW AND CONNECT WITH US



<https://www.facebook.com/LMIAerospace>



<https://www.linkedin.com/company/lmi-aerospace>



<https://twitter.com/LMIAero>

LMI Aerospace, Inc., including its subsidiaries and affiliates, embraces a culture of respect and expects participation, collaboration and innovative problem solving from every employee. We believe that diversity of opinions, experiences and perspectives is critical to our success. LMI provides equal employment opportunities to all employees and applicants for employment without regard to race, color, religion, sex, national origin, age, disability, gender identity or expression, sexual orientation, genetic information, veteran status, or any legally protected class. This policy applies to all terms and conditions of employment, including, but not limited to, recruitment, hiring, placement, promotion, termination, layoff, recall, transfer, leaves of absence, compensation and training.